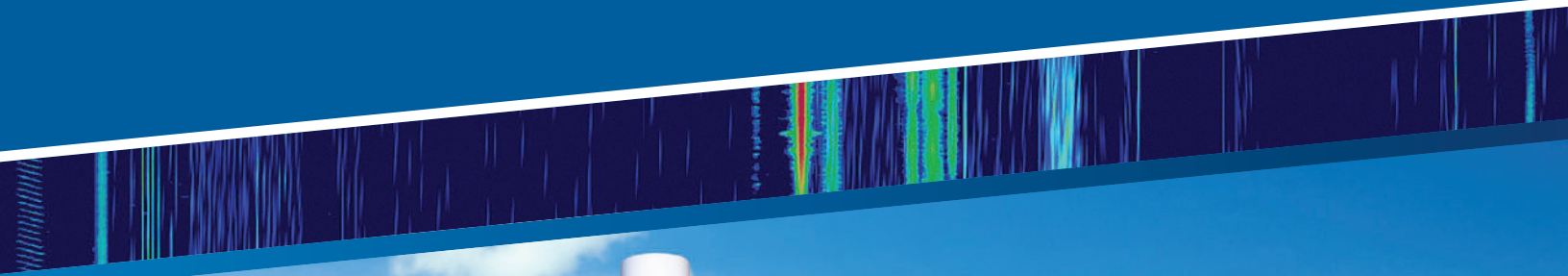


642 VHF/UHF/SHF Monitoring Antenna



TCI Model 642 VHF/UHF/SHF monitoring antenna shown in fixed site configuration.

The TCI Model 642 monitoring antenna covers an extremely wide frequency range, from 20 MHz to 8.5 GHz. The 642 does not require tuners, which eliminates the need for powered components within the antenna.

The Model 642 consists of a pair of spun aluminum disc-cones. The 642 assembly installs on to a building or tower structure via a standard 2" pipe mount and fastens to the antenna by SMA connection.

KEY FEATURES

- > Extremely broadband frequency range, 20 MHz to 8.5 GHz antenna
- > Omnidirectional receive pattern with better than unity gain, vertical polarization
- > Max gain at 0° elevation up to 45° elevation coverage (frequency dependent)
- > Light weight: <5 lbs.
- > COTS — short delivery time
- > Passive, no AC/DC power requirement
- > Simple mounting, standard 2" pipe
- > Ground plane independent

642 VHF/UHF/SHF Monitoring Antenna

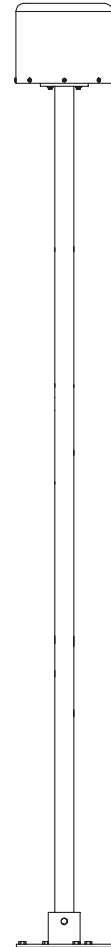
Model 642 Specifications

Frequency Range	20 - 8,500 MHz
Array Element Types	One omni V/UHF/SHF bicone
Antenna RF Outputs	One, 50 ohm, Type N connector
Dimensions	25 cm (9.5 in.) high x 28 cm (11 in.) diameter
Weight	2.2 kg (5 lbs.)
Environmental	Operating Temp: -25° to +65°

Sensitivity*

20 MHz	-10 dB μ V/m
100 MHz	-21 dB μ V/m
200 MHz	-23 dB μ V/m
500 MHz	-15 dB μ V/m
1 GHz	-10 dB μ V/m
2.5 GHz	-3 dB μ V/m
3.5 GHz	-1 dB μ V/m
5 GHz	+2 dB μ V/m
8 GHz	+5 dB μ V/m

* Vertical polarization



TCI INTERNATIONAL, INC. 3541 Gateway Blvd., Fremont, CA 94538-6585 USA
TEL: 1-510-687-6100 | FAX: 1-510-687-6101 | USA: 1-800-824-8074 | www.tcibr.com

